



MALVERN
COLLEGE

Transform their world

SURNAME:

FIRST NAME:

PREP SCHOOL:

Malvern College Academic Scholarship Examinations 2024

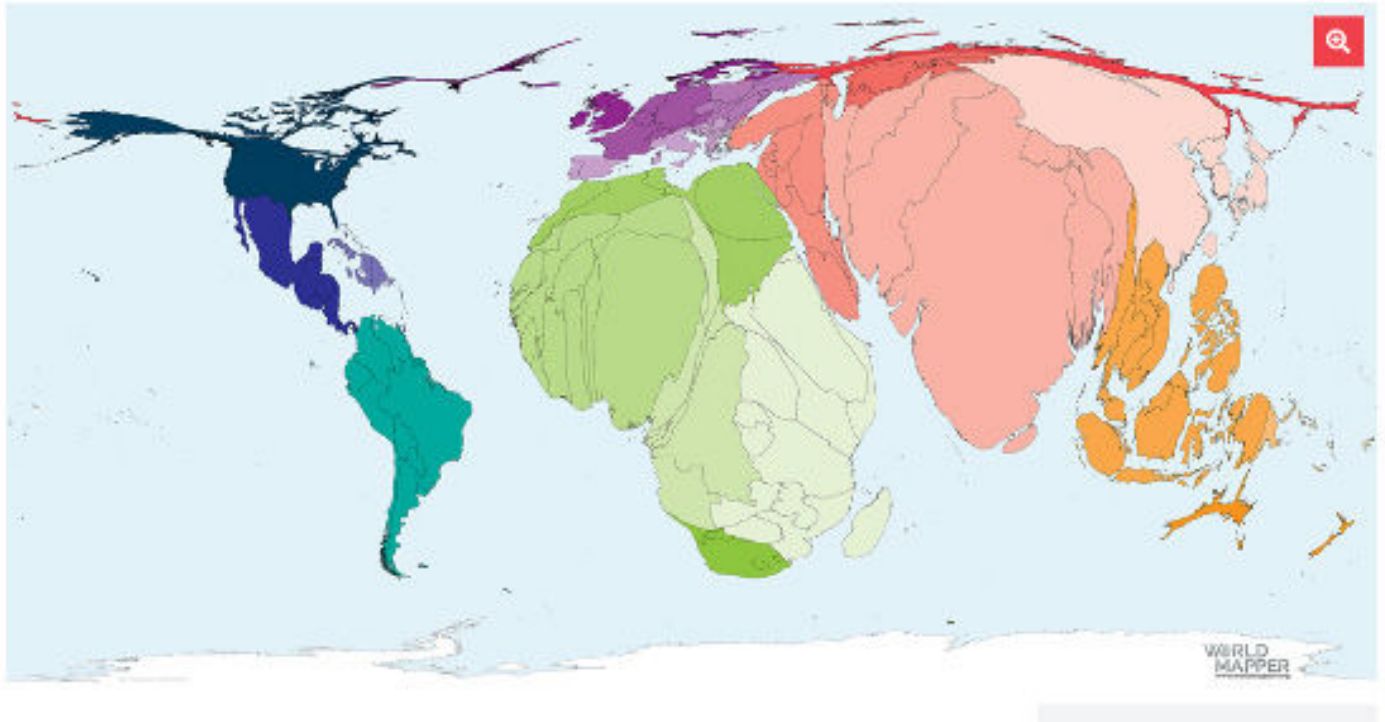
GEOGRAPHY

Please read this information before the examination starts:

- Please answer **all** the questions in Part A and Part B and **one** essay question in Part C.
- You are advised to spend 10-minutes on Part A; 20-minutes on Part B; and 30-minutes on Part C.
- The marks are listed by each question. The total mark available for this paper is 50.

PART A

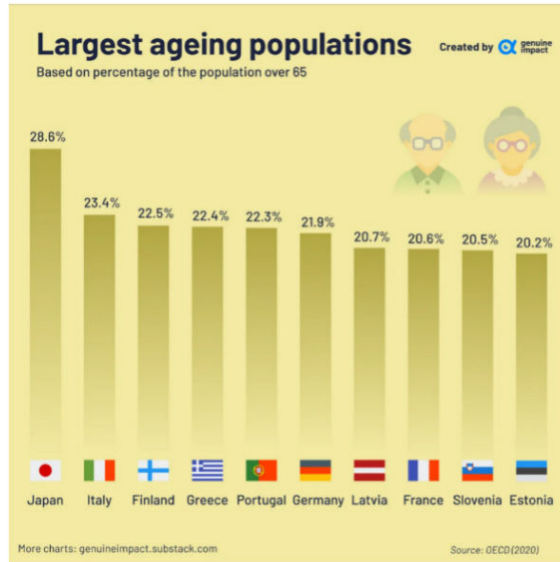
Answer questions 1-4 below. It is anticipated that this section should take you about ten minutes.



This map, taken from the Worldmapper web site shows the land surface resized by its population. Each territory in the map is proportional to the number of babies (both sexes) born in that area in 2022.

1. Describe the pattern of births shown in the map above. (2 marks)

2. Explain the pattern of births shown in the map above. (4 marks)



3. An ageing population is one where there are an increasing percentage of people aged 65 or over. Can you give one reason why there are large ageing populations in the countries shown in the graph above? (1 mark)

4. What do you think are the challenges of an ageing population? (3 marks)

PART B

Answer all questions in this section. It is anticipated that this section should take you about 15 minutes.

1. Primary data is data that you have collected yourself. Describe one way that you could collect primary data in the field and explain the geographic question that it would help to answer. (6 marks)

2. Secondary data is data that somebody else has collected, for example historic photographs and census data. Describe how you might use secondary data to support the study that you have mentioned above. (4 marks)

continues over page

3. When carrying out fieldwork you need to do a Risk Assessment to make sure that hazards have been identified and mitigation has been put in place. An example of this would be checking the weather forecast and then making sure that everybody has appropriate clothing.

Thinking about the fieldwork in question 1, describe two risks might you face and how might you mitigate against these? (4 marks)

PART C

Answer one of the following essay titles. Credit will be given for reference to place specific case studies. Each essay is out of 25 marks. It is anticipated that you will spend about 30 minutes on this section.

1. **“Volcanoes are dangerous, and people should never live near them”**. Discuss this statement.
2. **“Shanty towns are dangerous and dirty. They should all be knocked down”**. Discuss this statement.
3. **“Climate change will affect the whole world equally”**. Discuss this statement.
4. **“Globalisation has different effects around the world”**. Discuss this statement.

END OF QUESTION PAPER